

REMINGTON SUITE HOTEL AND SPA



Event inquiries:
smcgill@remingtonsuite.com
(318) 425-5000
220 Travis Shreveport, LA

Venues

The Royale Ballroom

Seated Capacity: 250

Cocktail Capacity: 350

Friday and Saturday (Up to 100 people): \$600/hr

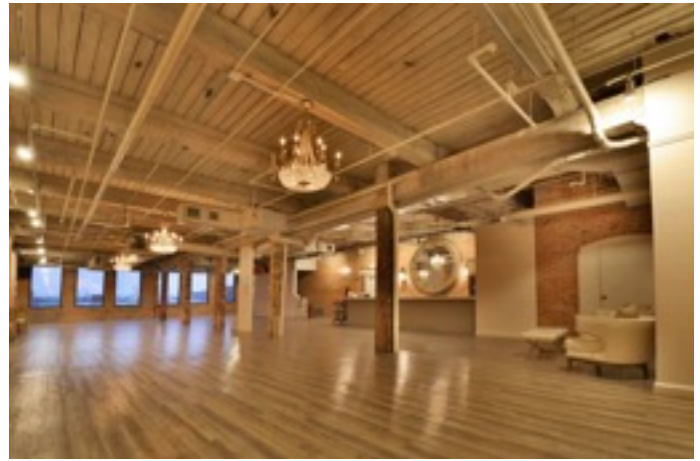
Friday and Saturday (100-200 people): \$700/hr

Friday and Saturday (200+ people): \$800/hr

Sunday-Thursday (Up to 100 people): \$350/hr

Sunday-Thursday (100-200 people): \$450/hr

Sunday-Thursday (200+ people): \$550/hr



The Remington Rooftop

Seated Capacity: 200

Cocktail Capacity: 300

Friday and Saturday (Up to 100 people): \$600/hr

Friday and Saturday (100-200 people): \$700/hr

Friday and Saturday (200+ people): \$800/hr

Sunday-Thursday (Up to 100 people): \$350/hr

Sunday-Thursday (100-200 people): \$450/hr

Sunday-Thursday (200+ people): \$550/hr



Royale & Rooftop Combo

Friday and Saturday (Up to 100 people): \$800/hr

Friday and Saturday (100-200 people): \$900/hr

Friday and Saturday (200+ people): \$1,000/hr

Sunday-Thursday (Up to 100 people): \$500/hr

Sunday-Thursday (100-200 people): \$600/hr

Sunday-Thursday (200+ people): \$700/hr



The Gallery Room

Seated Capacity: 70

Cocktail Capacity: 100

Friday and Saturday (Up to 50 people): \$350/hr

Friday and Saturday (50-100 people): \$450/hr

Sunday-Thursday (Up to 50 people): \$250/hr

Sunday-Thursday (50-100 people): \$350/hr

Service Fee: Included in all Above Mentioned Rental Rates

6 Hour Set Up Time Prior to Event

On Site Facilitator

Assistance with Set Up of Tables and Chairs

Up to 20-60" Round Tables, 6 Highboys, & 200 Chairs

Up to 5-6' rectangle tables and 5-8' rectangles

Up to 6-48" round tables

White Ivory Sofa Chairs (2)

Discounted Rates on Remington Suites

4th Floor Event Space

Seated Capacity: 30-40 (Varies with Layout)

Cocktail Capacity: 75

Friday and Saturday: Price starts at \$2,800

Sunday-Thursaday: Price Starts at \$1,900

Included in Above Mentioned Rental Rates

4 Hour Event

4- Penthouse Suites (all on 4th floor)

6 Hour Set Up Time Prior to Event

Set Up and Break Down of Tables and Chairs

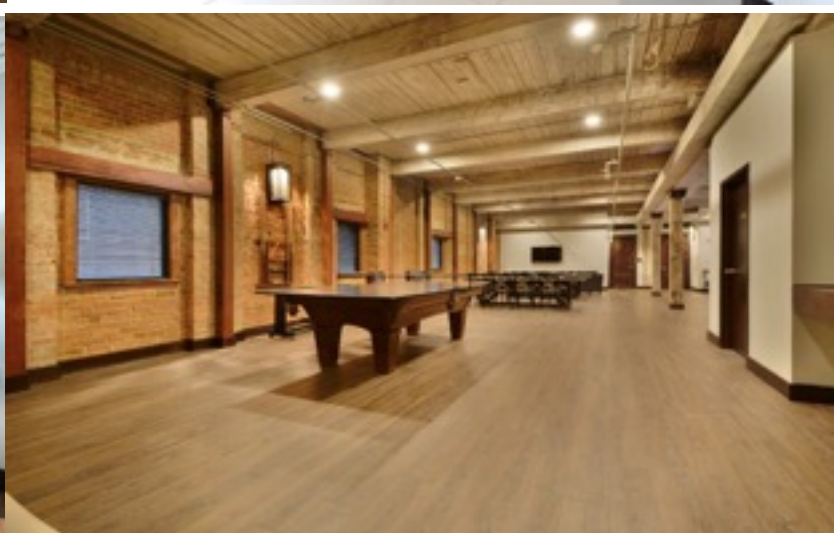
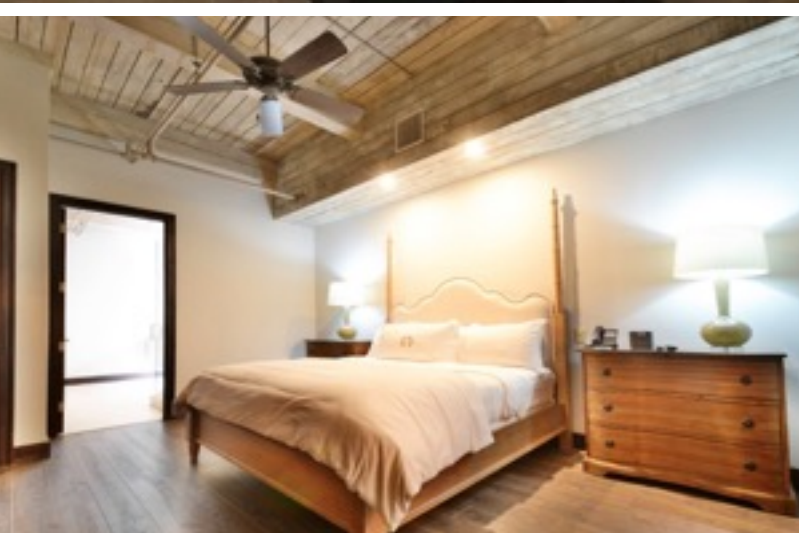
2-9 ft. Farm Tables

20 Cross Back Chairs

Pool/Ping Pong Conversion Table

Poker Table

Discounted Rates on Additional Sleeping Rooms



Beverage Packages

Beverage packages include disposable cups, napkins, and ice.

Glassware may be rented for an additional \$1.00 per person.

Signature drinks can be added to any package for an additional charge.

A 20% service charge will be added to the alcohol total.

Bartenders are \$25/hr.

Non-Alcoholic Drink Package

Choose 1 for \$1.50 per person/Choose 2 for \$2.50 per person

Sodas: Coke, Sprite, and Diet Coke

Tea: Sweet and Unsweet

Coffee: Premium Dark Roast

Cash Bar (Guests pay for own drinks)

Set-up fee of \$250 (includes first bartender)

Additional Bartenders are \$25 per hour.

Cash Bar Drink Prices:

Domestic Beer \$4

Craft Beer \$5

Wine \$6

Mixed Well Drinks \$8

Mixed Premium Drinks \$10

Tax is included in drink prices.



Wine & Beer Package

Beer: Bud Light, Michelob Ultra, Miller Light

Wine: House Cabernet, Chardonnay, Pinot Grigio, Pinot Noir

House Champagne, Soft Drinks

(Craft Beers available upon request for upcharge of \$1.00 per person).

1 hour: \$5/person

2 hours: \$10/person

3 hours: \$14/person

4 hours: \$18/person

Full Bar Package

Beer: Bud Light, Michelob Ultra, Miller Light

Wine: House Cabernet, Chardonnay, Pinot Grigio, Pinot Noir

House Champagne, Soft Drinks

Liquor: Tito's Vodka, Dewar's Scotch, Tanqueray Gin, Crown Royal, Jack Daniels, Captain

Morgan, Bacardi Rum, Sauza

(Craft Beers available upon request for upcharge of \$1.00 per person).

1 hour: \$8/person

2 hours: \$16/person

3 hours: \$23/person

4 hours: \$30/person

Premium Package

Beer: Bud Light, Michelob Ultra, Miller Light

Wine: Select 4 wines from the Kendall Jackson family (Chardonnay, Pinot Grigio, Riesling,

Cabernet, Pinot Noir, Merlot, Sparkling)

House Champagne, Soft Drinks

Liquor: Grey Goose, Ketel One, Woodford Reserve, Red Breast, Makers 10, Hendricks,

Captain Morgan, Patron, Balvenie

(Craft beers included but MUST Be requested)

1 hour: \$10/person

2 hours: \$20/person

3 hours: \$29/person

4 hours: \$38/person

Creative Add Ons

Margarita Bar: \$125 *Pick 2* Traditional, Berry, Strawberry and Spicy Margaritas on the rocks

(Approx. 25 servings)

Sangria Bar: \$75 *Pick 2* Red, White, and Peach

(Approx. 25 servings)

Interactive Moscow Mule Bar: \$150 Includes house vodka and toppings-strawberries,

blueberries, raspberries, mint, cucumber

(Approx. 25 servings)

Martini Bar: Consumption Based - \$8 per glass

Additional Services

- Glassware
 - Bar Glassware (Wine glasses, Champagne Flutes and Cocktail Glasses): \$1.00 per person
 - Water Goblets: .50 per person
- Farm Tables: \$50 each
- Wine Barrel Table \$75
- Projector & Screen \$150
- Microphone \$20 each
- Life Size Jenga (Rooftop Only) \$85
- Tall Space Heaters (Included with Rooftop Rental): \$125 each
- Propane for Fire Pits (Included with Rooftop Rental): \$30 each
- Ping Pong Table: \$125
- Poker Table: \$100
- Piano: \$125
- Champagne Wall: \$400 (Includes Glassware) *Please note, we do not replenish throughout the event. It will be filled 15 minutes prior to your guests arrival
- Day Before Add On: \$600
 - Access to Venue From 10am-8pm on Day Prior to Event

Remington Suites

WELCOME TO THE REMINGTON SUITE HOTEL AND SPA. WE'RE SHREVEPORT'S ONLY PREMIER BOUTIQUE HOTEL PROVIDING LUXURIOUS ACCOMMODATIONS IN RENOVATED, SPACIOUS SUITES. ENJOY OUR AMENITIES, INCLUDING A HEATED, INDOOR SALTWATER POOL, A HOT TUB, DRY SAUNAS, STEAM ROOMS AND FREE WI-FI.



4th Floor Penthouses

Number of Penthouses: 4 (All on 4th floor)

Sleeping Accommodations: 1 King Bed + 1 Pull Out Sofa

Max Capacity: 4 People

Amenities:

- In room Kitchenette
- Floor to Ceiling Windows
- Access to 4th floor common area Ft. Billiards Table and Full-Size Kitchen



5th Floor Penthouse

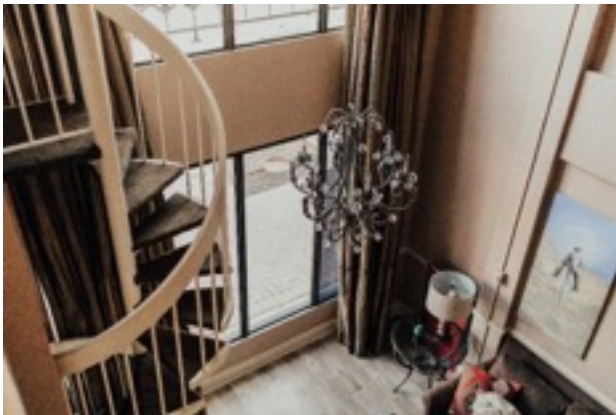
Number of Penthouses: 1

Sleeping Accommodations: 1 King Bed, 1 Queen, + 1 Twin

Max Capacity: 7 People (Sleeping Cots Available)

Amenities:

- Access to Full Size Kitchen
- In Room Safe
- Separate Living Area



The Grand Remington

Number of Suites: 1

Sleeping Accommodations: 1 King Bed + Pull Out Sofa

Max Capacity: 4 People

Amenities:

- Spiral Staircase
- Access to Suite from Both Levels
- Separate Living Area
- In Room Safe
- In Room Kitchenette



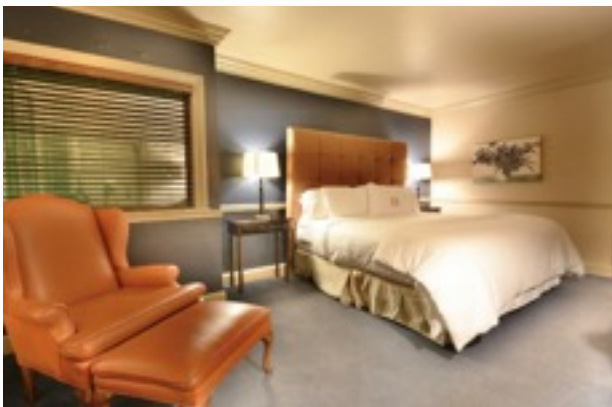
VIP Suites

- Number of Suites: 6
- Sleeping Accommodations: 1 King Bed (Several Offer Pull Out Sofa)
- Max Capacity: 4 People (Sleeping Cots Available)
- Amenities:
- Dining and Living Area
 - In Room Safe
 - In Room Kitchenette



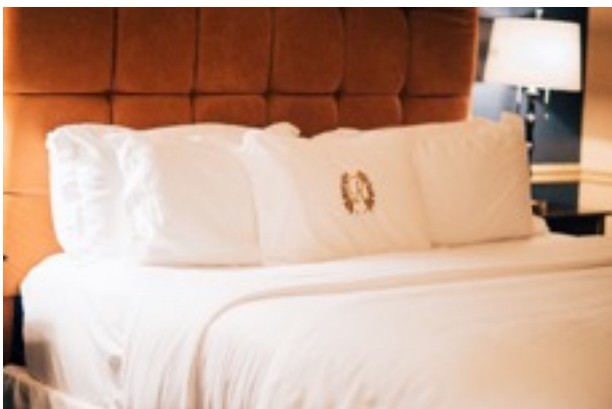
Premier Suites

- Number of Suites: 2
- Sleeping Accommodations: 1 King Bed (Suite 7 Offers Pull Out Sofa)
- Max Capacity: 4 People (Sleeping Cots Available)
- Amenities:
- Dining and Living Area
 - In Room Safe
 - In Room Kitchenette



Deluxe Suites

- Number of Suites: 7
- Sleeping Accommodations: 1 King Bed (Several Offer Pull Out Sofa)
- Max Capacity: 4 People (Sleeping Cots Available)
- Amenities:
- Living Area
 - In Room Safe
 - In Room Kitchenette



Standard Suites

- Number of Suites: 5
- Sleeping Accommodations: 1 King Bed (Suite 19 Offers Two Queens)
- Max Capacity: 2 People
- Amenities:
- In Room Safe
 - In Room Kitchenette